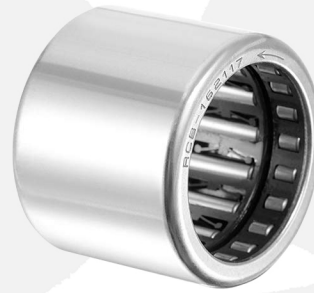
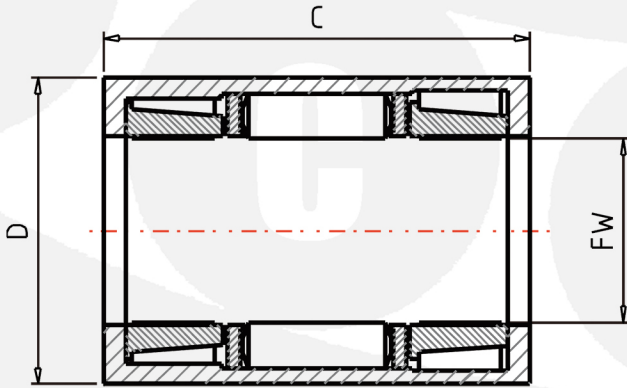


# One Way Clutch Bearing

Part Number: **RCB-081214-FS** with stainless steel springs  
**0.5000 x 0.7500 x 0.8750 inch**



FW Inscribed circle diameter	12.700	mm
D Outer Diameter	19.050	mm
C Width	22.22	mm
TC Torque Capacities	8.34	Nm
TC1 Torque Capacities	0.85	fm
CR Basic Dynamic Load Ratings	4400	
CR1 Basic Dynamic Load Ratings	450	kgf
PMAX Limiting Loads	2580	N
MASS Mass	16	g
MODH Minimum Outside Diameters of Housing	28	mm