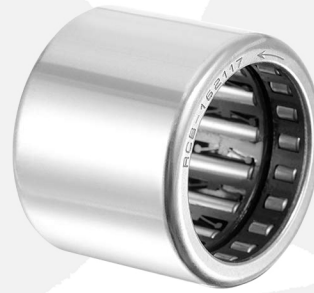
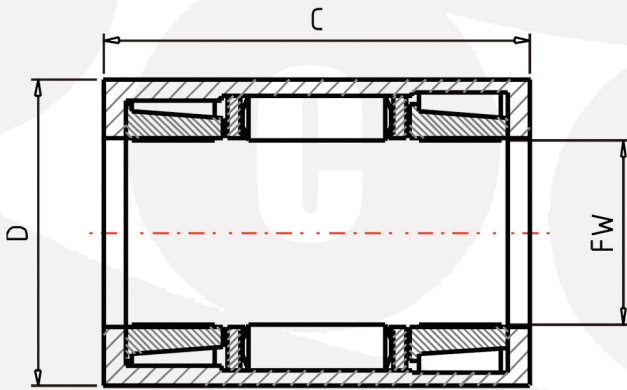


# One Way Clutch Bearing

Part Number: **RCB-121616-FS** with stainless steel springs  
 0.7500 x 1.0000 x 1.0000 inch



FW Inscribed circle diameter	19.050	mm
D Outer Diameter	25.400	mm
C Width	25.40	mm
TC Torque Capacities	22.06	Nm
TC1 Torque Capacities	2.25	fm
CR Basic Dynamic Load Ratings	5550	
CR1 Basic Dynamic Load Ratings	565	kgf
PMAX Limiting Loads	3700	N
MASS Mass	26	g
MODH Minimum Outside Diameters of Housing	36	mm