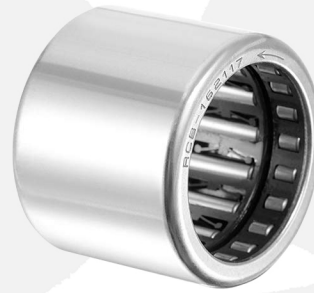
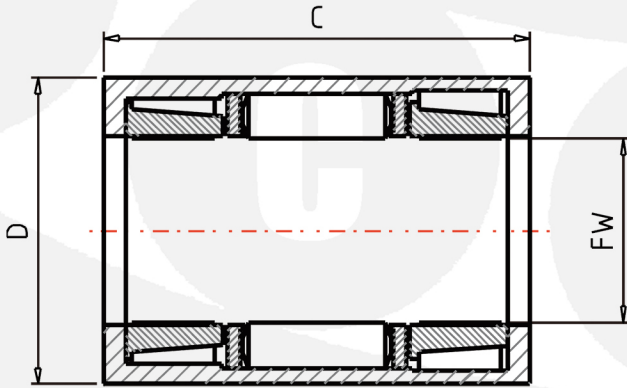


One Way Clutch Bearing

Part Number: **RCB-162117-FS** with stainless steel springs
 1.0000 x 1.3130 x 1.0630 inch



FW Inscribed circle diameter	25.400	mm
D Outer Diameter	33.338	mm
C Width	27.00	mm
TC Torque Capacities	46.58	Nm
TC1 Torque Capacities	4.75	fm
CR Basic Dynamic Load Ratings	9750	
CR1 Basic Dynamic Load Ratings	995	kgf
PMAX Limiting Loads	6750	N
MASS Mass	45	g
MODH Minimum Outside Diameters of Housing	48	mm