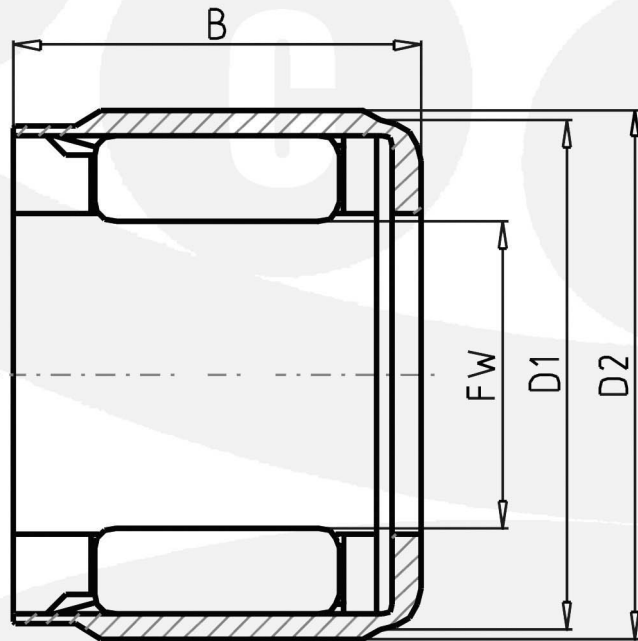


Miniature One-Way Clutch Bearing

Part Number: **EWC0809A** with synthetic resin springs, light load type

Dimension: 8 x 12 x 12.4 x 9 mm



Outer Ring: ST14 with nickel plating
 Cage: synthetic resin – POM/PA66
 Roller: 4Cr13 / SUS304



FW Inside Diameter	8	mm
D1 Diameter	12.0	mm
D2 Diameter	12.4	mm
B Bearing Width	9	mm
ORDER Bearing No.	EWC0809A	
TC Torque Capacity	0.49	Nm