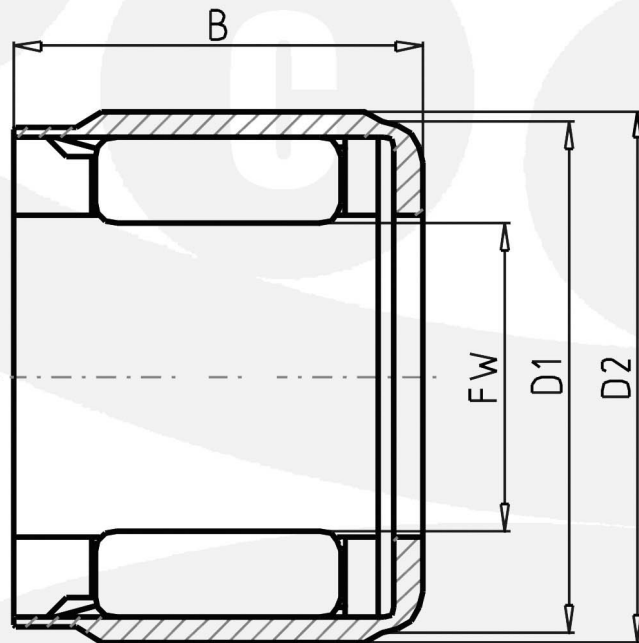


# Miniature One-Way Clutch Bearing

Part Number: **EWC0608C** with synthetic resin springs, heavy load type

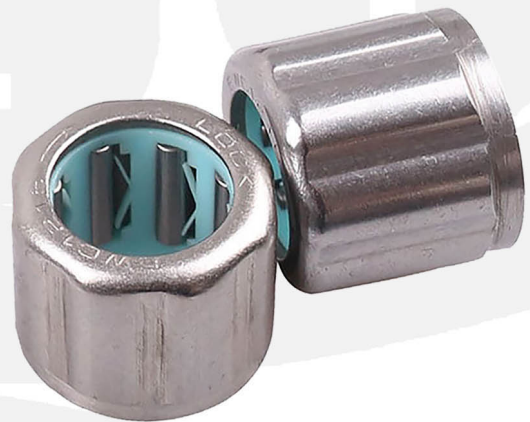
Dimension: 6 x 10 x 10.4 x 8 mm



Outer Ring: ST14 with nickel plating

Cage: synthetic resin – POM/PA66

Roller: 4Cr13 / SUS304



FW Inside Diameter	6	mm
D1 Diameter	10.0	mm
D2 Diameter	10.4	mm
B Bearing Width	8	mm
ORDER Bearing No.	EWC0608C	
TC Torque Capacity	0.44	Nm