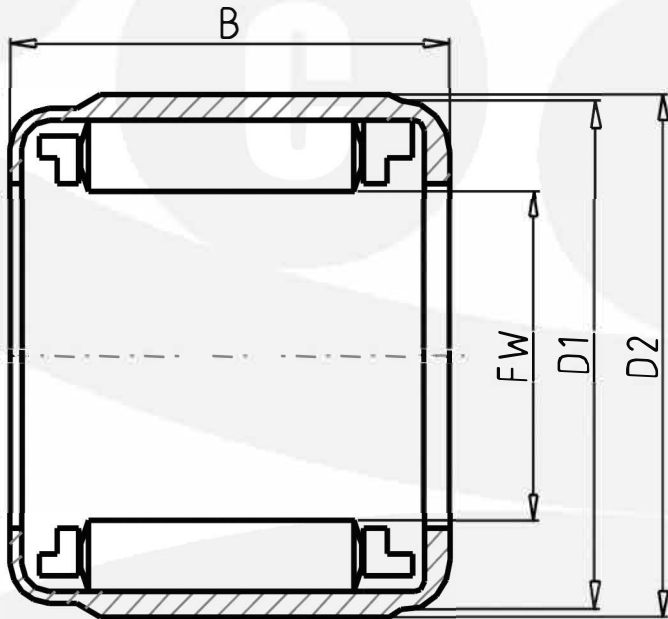


# Miniature One-Way Clutch Bearing

Part Number: **1WC0815** with metal springs, rust prevention & heavy load type

Dimension: 8 x 14.2 x 15 x 14.5 mm



Outer Ring: ST14 with nickel plating

Cage: resin – POM / PA66

Roller: 4Cr13 / SUS304



FW Inside Diameter	8	mm
D1 Diameter	14.2	mm
D2 Diameter	15.00	mm
B Bearing Width	14.5	mm
ORDER Bearing No.	1WC0815	
TC Torque Capacity	2.65	